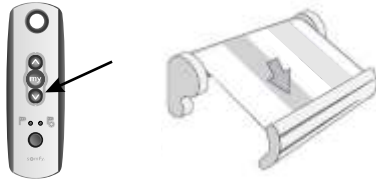


# Eolis 3D WireFree™ Quick Reference Guide

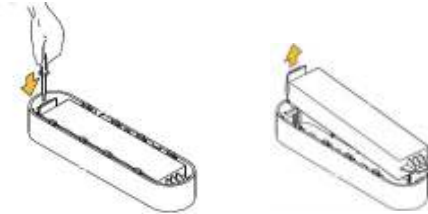
## STEP 1

Make sure the "DOWN" button on the remote extends the awning.



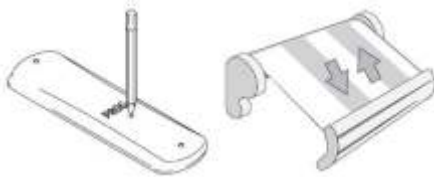
## STEP 3

Remove the sensor housing using a small screwdriver.



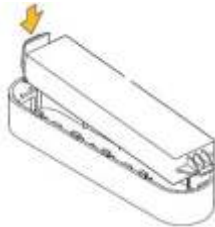
## STEP 5

Press the programming button on the back of the remote until the awning jogs.



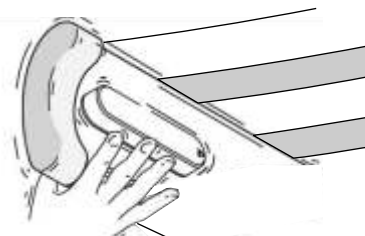
## STEP 7

Put the sensor electronics back in the housing.



## STEP 9

Test the sensor by pushing up and down on the awning front bar or arm until it begins to retract. You can use the remote to stop the awning after 5 seconds (first test mode).



## STEP 11

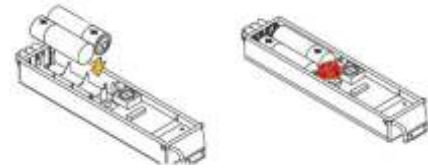
Make adjustments to the sensitivity if needed and test it again.

## STEP 2

Slide the mounting plate off the 3D housing. With the awning extended, install the mounting plate using the preferred method suggested by the awning manufacturer.

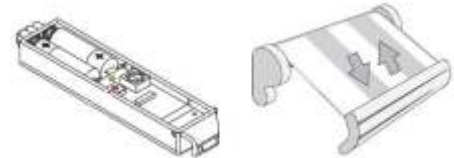
## STEP 4

Install the batteries. Make sure the red light blinks.



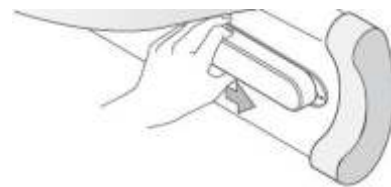
## STEP 6

Press the programming button on the 3D until the awning jogs again.



## STEP 8

Slide the housing back on the mounting plate.



## STEP 10

Bring it back out and test it again. You can use the remote to stop the awning after 5 seconds (second test mode).

